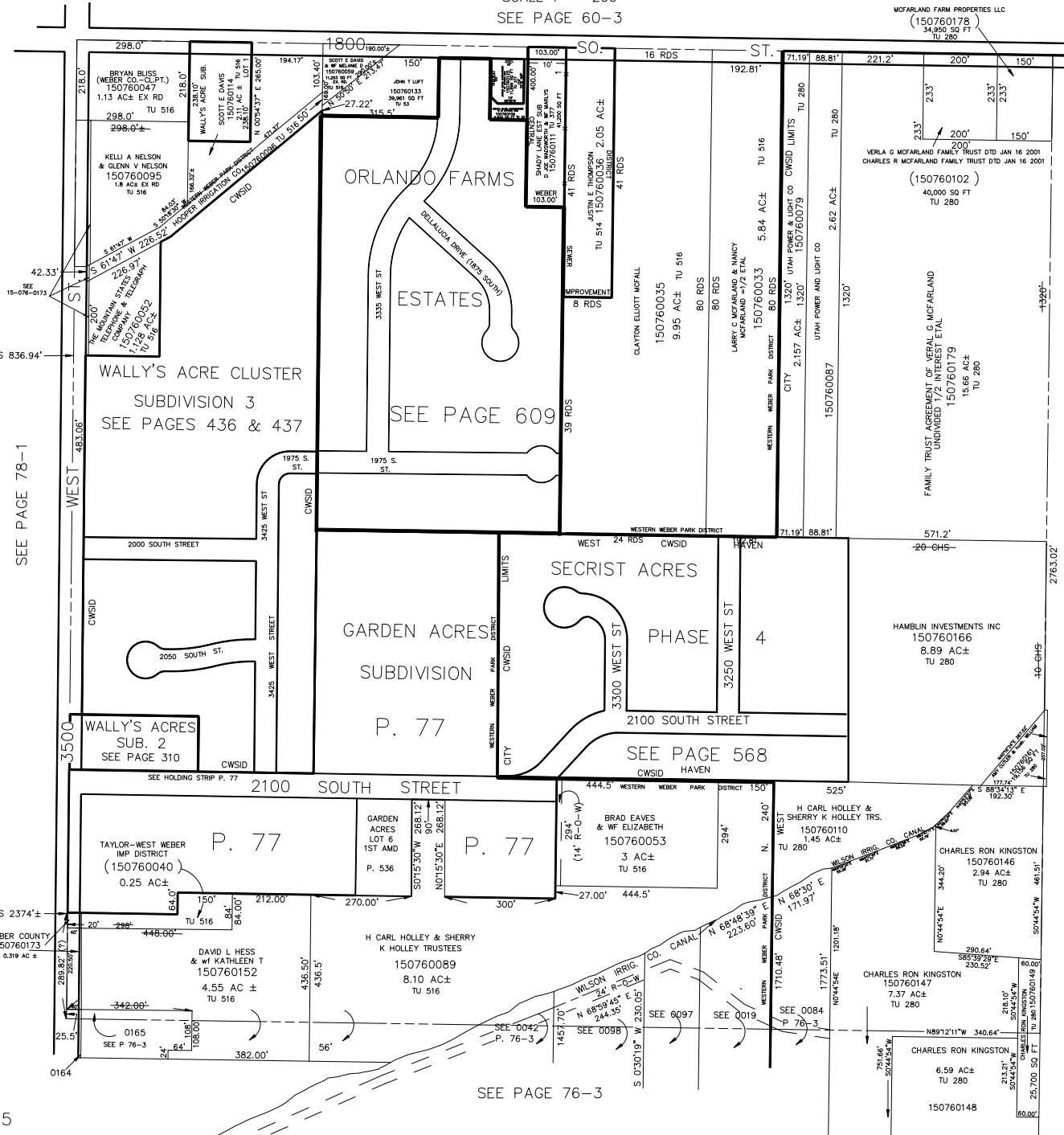


SECTION 27, T.6N., R.2W., S.L.B. & M.

TAXING UNITS: 53, 280, 377, 421,514,516

IN WEST HAVEN CITY & WEBER COUNTY

SCALE 1" = 200'
SEE PAGE 60-3



SEE PAGE 78-1

SEE PAGE 78-1

SEE PAGE 609

SEE PAGE 568

SEE PAGE 76-3

SEE PAGE 76-1